



Hitchins
since 1932



032 017
Water-based Coating/Paint

SEALFLEX

WATERPROOFING
SYSTEM FOR WALLS





032 017
Water-based Coating/Paint

SEALFLEX

WATERPROOFING SYSTEM FOR WALLS

SEALFLEX is a high-build, heavy-duty, flexible and elastomeric waterproofing system for walls. It is especially designed for exterior use under a variety of conditions.

SEALFLEX provides the substrate with a strong and durable membrane that protects and waterproofs. The membrane, which can bridge small cracks, has excellent tolerance to movement and micro-cracks within the substrate.

SEALFLEX is ideally suited for substrates such as concrete or plaster that contain hairline or shrinkage cracks.

SEALFLEX incorporates the latest surface coatings and waterproofing technology and is available in a wide range of decorative colours and finishes.



◀ NATIONAL MUSEUM - SINGAPORE

◉ Composition

The SEALFLEX system is multi-layered system that consists of a primer, an elastomeric bodycoat and a durable protective topcoat.

Primer

The primer prepares the substrate for the system and also ensures a good bond between the substrate and the system can also bind and strengthened the surface. The type of primer used depends on the substrate and its condition. There are many specialized primers available.

Bodycoat

The bodycoat, name Formelast, is the basic ingredient of SEALFLEX that gives the system its strength, build, elasticity and crack bridging properties.

Formelast is a waterbased product.

Topcoat

The topcoat gives SEALFLEX its colour, gloss level and exterior durability properties. The commonly used topcoats are waterbased. For optimum durability and dirt pickup resistance, solvent based topcoats are available.

◉ Areas of Usage

All external vertical substrates such as concrete, lightweight concrete blocks, bricks and masonry.

◉ Special Features

- **Waterproof**
SEALFLEX seals porous substrates such as hollow blocks, bricks, plastered walls as well as concrete
- **Flexibility**
SEALFLEX is highly flexible coating system, can be used in areas where movement within the substrate is anticipated. It can bridge small cracks
- **Vapour Permeability**
SEALFLEX is vapour-permeable, which allows it to breathe thus permitting trapped moisture vapour to escape into the atmosphere.
- **Durability**
SEALFLEX is made up of high quality products made from the best materials available, It is recoatable thus increasing its life span.
- **Protective**
SEALFLEX has good impact, fungi and algae resistance
- **Anti-carbonation Protection**
SEALFLEX provides protection against concrete carbonation, exceeding recommended values by up to five times.
- **Weather Proof**
The topcoat provides SEALFLEX with resistance to sunlight and weathering. It has been successfully used for many years in tropical as well as temperature climate conditions.
- **Decorative**
SEALFLEX is available in a wide range of decorative and aesthetic colours, in gloss or satin finish as well as in textures.

◀ HYDE PARK RESIDENCES - COLOMBO, SRI LANKA



◀ JOYA RESIDENCE - MANILA PHILIPPINES



PROJECTS

MAIOR PROIECTS



◀ Amway HQ - Malaysia



◀ Hemas Hospital - Colombo, Sri Lanka



◀ Hanoi Tower - Hanoi, Vietnam



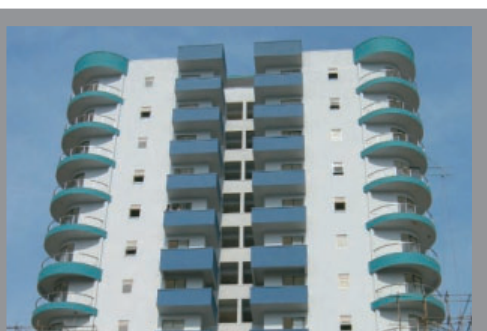
◀ Jasmine Tower Mumbai, India



◀ PKK BUILDING - Indonesia



◀ Hoechst House - Mumbai, India



◀ St Michael Apartment - Colombo, Sri Lanka



◀ Toho Garden - Singapore



◀ Stamford Court - Singapore

SEALFILE



◀ PALM COURT BUILDING - MUMBAI, INDIA



◀ MERALCO BUSINESS CENTER - MANILA, PHILIPPINES

◀ PREMIER PACIFIC PINNACLE - COLOMBO, SRI LANKA



WARRANTY INFORMATION

Only Hitchins' trained applicators are approved to undertake all application work. Hitchins products carry a long-term warranty for both materials and workmanship. The warranty is further backed by Hitchins International Fidelity Fund. Please check with our local applicators if this fund is available in your country. For complete warranty and other related information, please contact Hitchins regional offices.

Revision A

Hitchins



| Distribution Network

SINGAPORE

Hitchins (FE) Marketing Pte Ltd

30, Toh Guan Road #07-05

ODC Districentre

Singapore 608840

Telephone: (65) 6861 1177

Facsimile: (65) 6863 4240

Email: hitchins@hitchins.com

MALAYSIA

Hitchins (Malaysia) Sendirian Berhad

No. 26 Jalan 4/10B

Spring Crest Industrial Park 68100 Batu Caves, Selangor, Malaysia

Telephone: (60-3) 6185 8888

Facsimile: (60-3) 6185 0668

Email: hitchins@streamyx.com

CHINA

Shanghai Hitchins Da Sheng Waterproofing Materials Co., Ltd

No. 58, 699 Nong, Bei Qing Gong Lu Hua Cao Zhen, Ming Hang Qu Shanghai P.R.

China Post Code 201107

Telephone: (86-21) 62219815/7/9 Facsimile: (86-21) 6221 9812

Email: samkim@hitchins.com

BRUNEI

Hitchins (Borneo) Sendirian Berhad

P.O. Box 1675

Bandar Seri Begawan 1916

Telephone: (673-2) 652561

Facsimile: (673-2) 652563

Hitchins Approved Applicator



**WATERPROOFING
& BUILDING PROTECTION**

Hitchins (FE) Marketing Pte Ltd

Tel: (65) 6861 1177 Fax: (65) 6863 4240

Email: hitchins@hitchins.com [Http://www.hitchins.com](http://www.hitchins.com)